

Quality - Reliability & Trust

MEX-Bollards

Crash Rated & Certified

- ✓ Warranty & after Sale Service
- ✓ All in One Flexible & Smart Solution
- ✓ MEX Security & Safety Features

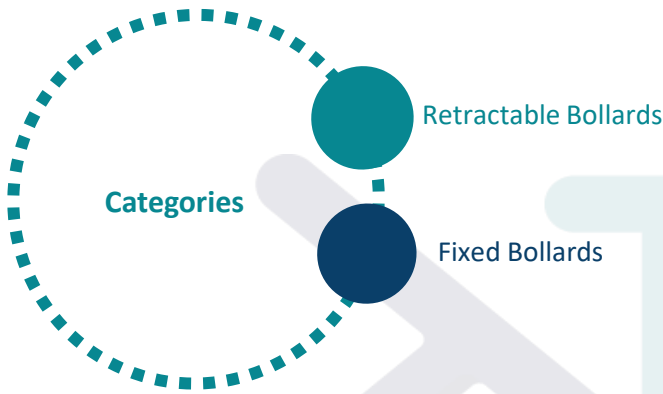


MECHATRONIX MEX-Bollards:

Mechatronix Offers Crash Rated Retractable & Fixed bollards based on the security requirements. The Mechatronix MEX Bollards are Robust in design. A Durable & flexible security solution. The bollards have short operating time and shallow foundations. Quick & Easy to install & low in maintenance.

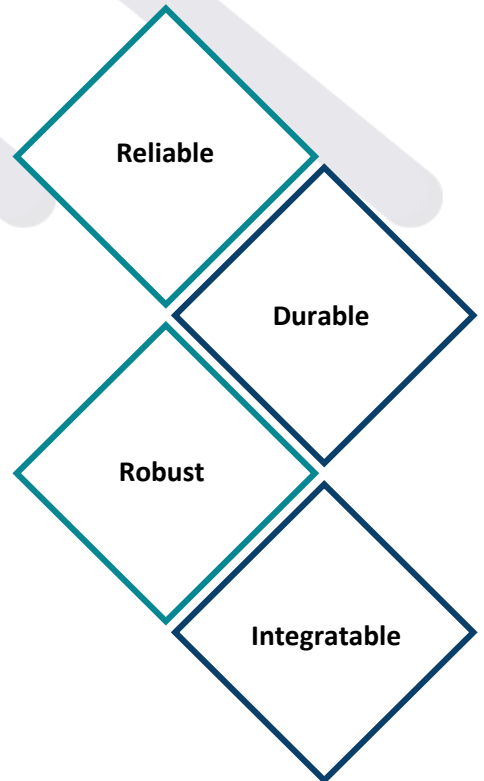
The bollards are designed to protect High target areas to prevent high impact of Vehicle attack. Even the Unrated bollards has the stopping power to prevent the vehicle entering into the perimeter.

According to the international standards Mechatronix Mex Rated bollards are Certified & tested K-Rated. The K-Rated bollards are tested and proven to stop 15000 lb. Truck with impact Rate at 30, 40, 50 MPH. The K-Ratings are K-4, K-8 & K-12.



Safety & Security Features:

- ✓ Robust & Aesthetically appealing design for Security Installations
- ✓ Crash Rated Certified standards
- ✓ Available in 316L Stainless steel finish
- ✓ Quick Installation & Low Maintenance
- ✓ Bi-Directional Stopping Capability
- ✓ Removable & Fixed Models for variable Site locations.
- ✓ Mex-Hydraulic Unit with 5-HP Imported Motor
- ✓ Corrosion Resistant & suitable for All weather Conditions
Built-in Signal Lights
- ✓ Easy & Quick integration with wide range of devices
- ✓ Unrestricted Spacing for Bollards according to site Clearance
- ✓ Warranty & after Sale Service with Terms & Conditions



MEX-Bollards:

The Crash rated bollards also prevent vehicles to strike against building and facilities. These are deployed to create the security zones. In case of Collision the security bollard absorb the impact. The Chain is an optionally used for motorcycle barrier.



Applications:

The bollards can be installed on the Entrances, Parking lots, Lane delimiters, pedestrian zones and High Security zones in conjunction with Fixed and Crash Rated movable bollards. Mechatronix Standard bollards set is based on three or five bollards.

The bollards are designed for installation on commercial properties, Airports, governmental building, power houses, Military sites and high target security zones. Mex bollards contain flexible steel structure & optimal stopping power. The installation is easier and less expensive



● Military & Government Installations

● Commercial sites & Storage Facilities

● Corporate Security

● Offices & Banks



● Airports, Stadiums and ports

● Educational Centers & Embassies

● Public transportation

● Other Indoor Installations



Technical Specifications:

Materials	316L Grade Stainless steel
Power Requirements	220 – 240 VAC – 50 Hz
Operation	Hydraulic or Pneumatic
Hydraulic Unit	Mex Hydraulic Unit – 5 HP Motor
Operating Speed	3s (Adjustable)
Crash Rating	K-12, K-8, K-4
Control Panel	PLC Based Control Unit
Working Humidity	0% ~ 95%
Recommended Installation	Indoor & Outdoor

Model & Designs:

Mode of operations:

Retractable Bollards

Fixed Bollards



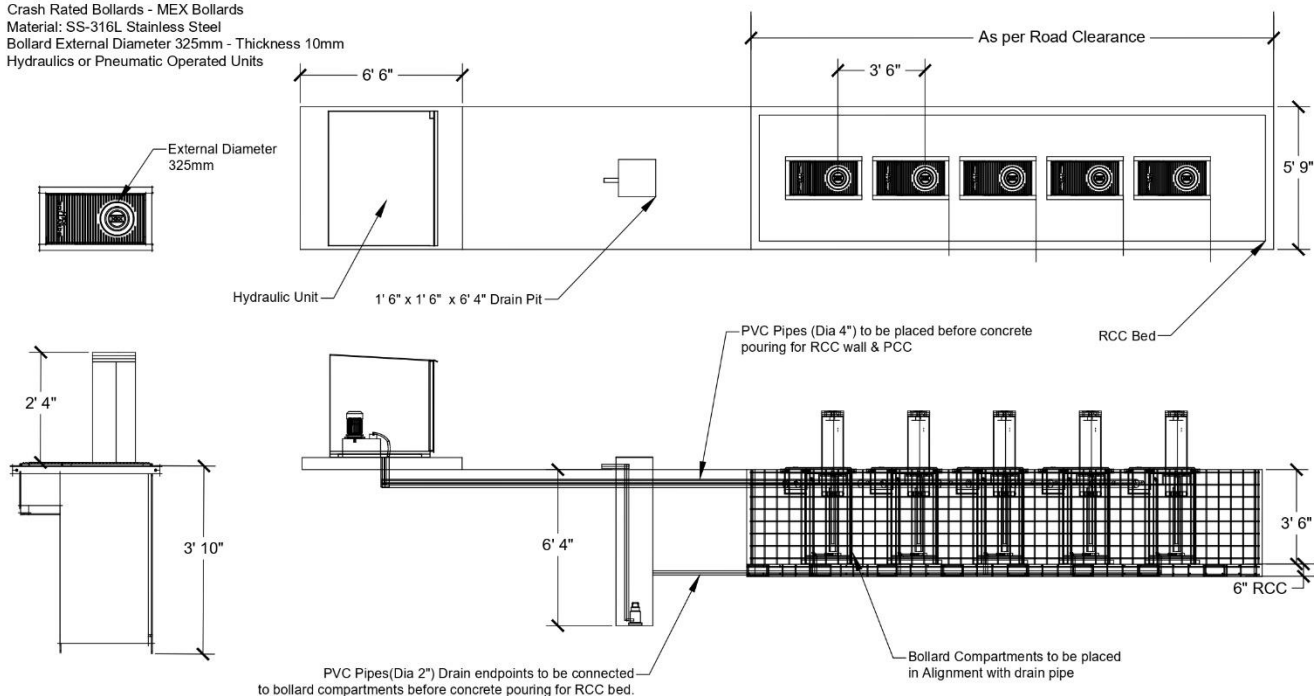
Installation & Maintenance:

The bollards can be installed on the entrances, Parking lots, Lane delimiters, pedestrian zones and High Security zones in conjunction with Fixed and Crash Rated movable bollards. Mechatronix Standard bollards set is based on three or five bollards.

The bollards are designed for installation on commercial properties, Airports, governmental building, power houses, Military sites and high target security zones. Mex bollards contain flexible steel structure & optimal stopping power. The installation is easier and less expensive

Drawings:

1. Crash Rated Bollards - MEX Bollards
2. Material: SS-316L Stainless Steel
3. Bollard External Diameter 325mm - Thickness 10mm
4. Hydraulics or Pneumatic Operated Units



©Mechatronix. All Rights Reserved



TITLE:
MEX-Bollards - Crash Rated

DESCRIPTION:
Crash Rated Bollards Manufacturing & Civil Work

DESIGNED BY:
Muhammad Ahtsham khan

CHECKED BY:

APPROVED BY:

MATERIAL:
SS

WEIGHT:
-

FINISH:
-

SCALE:
1:1

DATE:
01/11/2021

UNITS:
ft./in.

Our Clients:



Product Gallery:

