

Quality - Reliability & Trust

Road Blockers

Certified Crash Rated

- ✓ Warranty & after Sale Service
- ✓ All in One Flexible & Smart Solution
- ✓ MEX Security & Safety Features

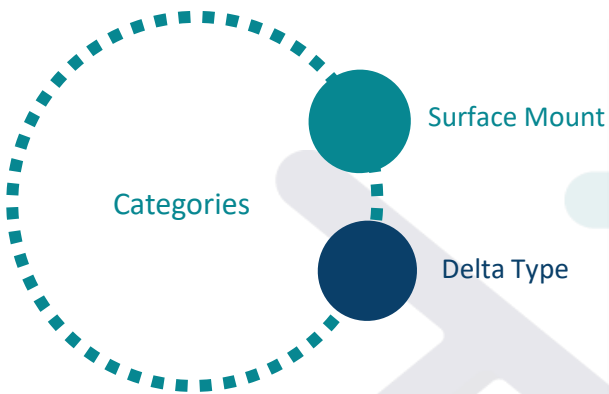


Mechatronix-Road Blockers:

Road Blocker is used for controlling the access of vehicles to sensitive perimeter. MECHATRONIX" is manufacturing Road Blockers since 2009. We have 400+ Installations of Road Blockers in all over Pakistan. Our Robust Design for Road blocker with Crash Rating can be installed for maximum security and safety applications.

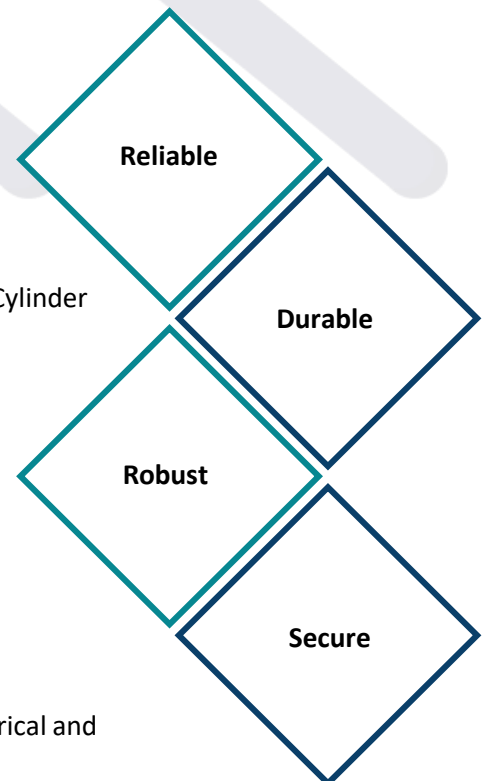
The K12 crash rating designed wedge barrier deters traffic and is highly visible when in use. MEX Security aimed blockers has been designed to suit various security needs.

Automatic (PLC Based), UHF Reader, Remote control, Under Vehicle Surveillance system can be easily integrated with Road Blocker. The Road blocker dimensions can be according to site open clearance or as upon client request.



Safety & Security Features:

- ✓ Crash Rated K-4, K-8, K-12 Certified Blocker
- ✓ Heavy Duty Mechanism for MEX Security & Durability
- ✓ Programmable (PLC Based) Control Panel
- ✓ Compact Hydraulic unit with heavy duty motor, Solenoid Valves & Cylinder
- ✓ Manual Hand Pump operation in case of Power failure
- ✓ Durable & Corrosion Resistant - Red Oxide & Enamel Coating Finish
- ✓ Flexibility to Integrate with wide Range of Access Control devices
- ✓ Available with Accessories – Safety Loop Detectors, Push buttons, Traffic Lights, Indication LEDs, Colored tough pavers etc.
- ✓ Easy Installation & Low Maintenance
- ✓ Weather Proof Control Cabinet will house all active hydraulic, electrical and electronic component
- ✓ Warranty & after Sale Service with Terms & Conditions



Product Specifications:

Material	Mild Steel
Raised Height	600-1000 mm (Adjustable)
Axle Load Resistance	20 Tons
Power Requirement	3 Phase, 50-60 Hz
HCU Motor	Heavy Duty motor, 5HP 400V
Structure	Composite Fabricated Structure with Different Sizes of Flange Beams, UPN Channels and Equal Angle Section 6 - 10mm
Operational Speed	4-6 Seconds
Top Chequered Plate	Antiskid 10mm Thick Plates
Hydraulic Pump	14Litres Per Minute at 1400 RPM , Gear Type , Max 2800 RPM , Aluminum
Hydraulic Actuators	65mm External Diameter, 50mm Shaft Diameter, Synthetic High Pressure Seals
Safety Valves & Gadgets	Pressure Safety Valve , Set on 140 Bars and Manual Relieve Valve
Maximum allowable piping between Pistons of Road blocker and Hydraulic system	At maximum 20 meter Required
Tank Size , Filters , Gauges	20-30 Liters , Oil Level, Suction and Breather Filter Attached
Protection Relays	Voltage overload/under load, Phase Protection Relay Included, overcurrent protection through CB
Control Cabinet	Weather Proof Control Cabinet will house all active hydraulic, electrical and electronic component
Control Unit	Industrial PLC Based Electronic Control Unit
Finish	Red Oxide & Enamel Coating Colored Tough pavers (Optional)

Product Description:

The Mex Road Blocker along with MEX security features there are safety loop detectors & light sensors for vehicle safety. A heavy duty hydraulic system is best suitable for continuous operations.

According to the international standards Mechatronix Mex Blockers are Certified & tested K-Rated. The K-Rated bollards are tested and proven to stop 15000 lb. Truck with impact Rate at 30, 40, 50 MPH. The K-Ratings are K-4, K-8 & K-12.

The road blockers feature manual raising and lowering, and install flush to the finished roadway when retracted. The Road blocker is operated with Hydraulic control unit. In case of power failure the blocker can be lifted or lowered manually using hand pumps and valves.

It can be integrated with wide range of Biometric & Access control devices and control system. The internal control panel is PLC based.

Models & Designs:

01

Surface Mount



02

Delta Type



Applications:



- High impact applications
- Utility Buildings
- Residential applications
- Corporate Places



- Frequent use applications
- Educational centers & Embassies
- Health care center
- Commercial towers



Surface Mount Road Blocker :

Surface mounts are designed and installed on high security risk areas. The surface mount is a solution for quick installation & low maintenance. The surface mounts are unique in design and highly secure solution. The Blocker does not have any depth as its installation does not require heavy civil work.

Delta Type Road Blocker :

Delta type Road blockers are designed for permanent installation in a RCC foundation. The blocker is hydraulic or pneumatic control that quickly raise or retract.

It is a crash Rated tested & certified solution to control heavy duty vehicle. The design & construction of Road Blocker consist of heavy steel sections with mild steel skirts & covers. The top plate is checker sheet, anti-slip plate to withstand an axle load of 15-20 tons.

The blocking segment shall be secured into a subsurface mounting frame and will be rotated through 35~ 43 degrees to secure the roadway. On impact, the forces exerted on the blocking segment should be partially absorbed by the structure with the balance being transmitted through the substantial frame and into the re-enforced foundations. The segment is designed to absorb / withstand impacts from small and large commercial vehicles like, cars, van, SUV & and other higher chassis vehicle.

Segment Height

The height of the segment when in the closed (raised) position, as measured from the top of the mounting frame, will be a minimum of 650mm (can be customized) to minimize the possibility of site penetration and to ensure that higher chassis vehicles are restrained.

Segment Width

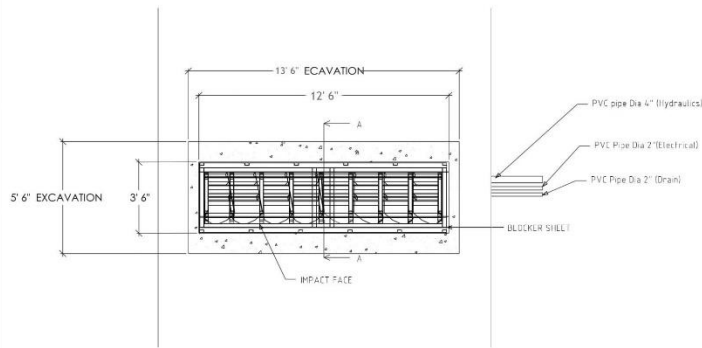
The nominal width of the blocking segment can be 4,000mm although this may be decreased and increased to a maximum of 7,000mm. (Please note that it is not advisable to install units wider than 4,000mm due to the significant risk of a security breach caused by the possibility of dual lane traffic flow.)

Finish

The segment and mounting frame are to be finished with an anti-corrosion paint in black with yellow, black with white and Red with White diagonal stripes over-painted on the segments front skirt and road plate with highly reflecting text of "STOP" on the front skirt.

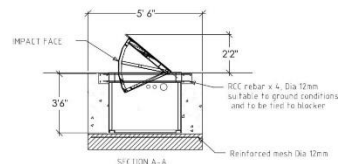
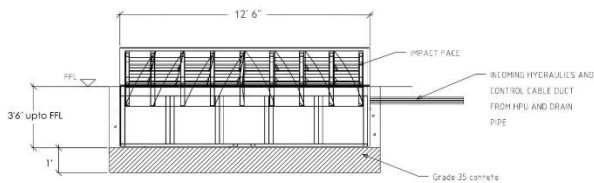


Drawings & Dimensions :



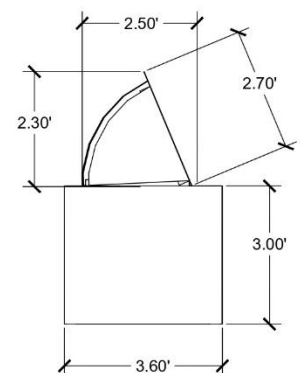
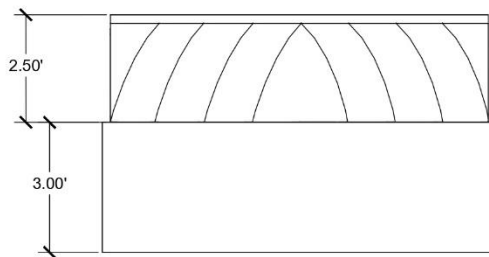
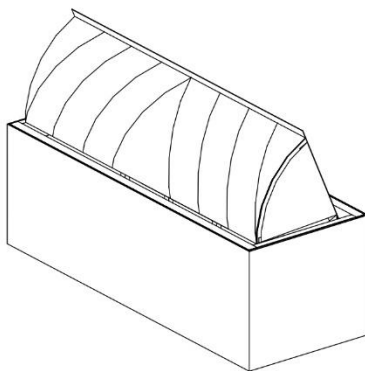
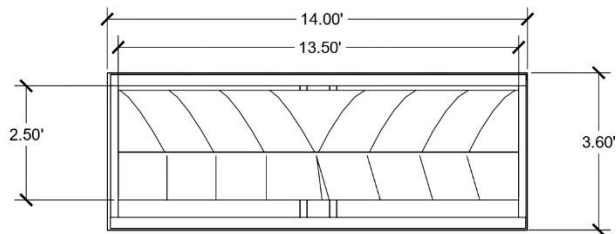
NOTE:

1. ALL CONCRETE TO BE GRADE C35 UNLESS OTHERWISE SPECIFIED, AIR-ENTRAINED AT SURFACE.
2. THIS DRAWING IS TO BE READ IN CONJUNCTION WITH ALL RELEVANT ENGINEERS AND ARCHITECTS DRAWINGS
3. REFER TO METHOD STATEMENT AND BLOCKER INSTALLATION MANUALS FOR FURTHER INFORMATION.
4. HPU SECURED TO GROUND USING BOLTS
5. ALL FOUNDATION LEVELS TO BE ESTABLISHED FROM FULL SITE SURVEY PRIOR TO COMMENCEMENT OF WORKS
6. BLOCKER IMPACT FACE TO BE FACING TRAFFIC FLOW
7. HPU POWER SUPPLY 3Pz 415V AC 50HZ 16AMP



DRAWN BY:		VERIFIED BY:	APPROVED BY:
DESIGN TEAM – MECHATRONIX			
DATE:	CUSTOMER:	UNITS:	
17-10-2017		Architectural	
DRAWING NO:	D TYPE ROAD BLOCKER CIVIL WORKS DETAIL		
MCTX – DTP01			
<div>Plot No 109, Street # 9, Industrial Area, I-10/3, Islamabad Tel: 5-923 051 4430 3671-9 Fax: 5-923 051 4439 370 info@mechatronix.com.pk</div>			
<div>MECHATRONIX</div> <div>This drawing is the property of Mechatronix. This drawing may not be transferred, modified, reproduced without the consent of Mechatronix.</div>			

1. Road Blocker - Delta Type
2. Material: Galvanized Steel
3. Finish: Painted

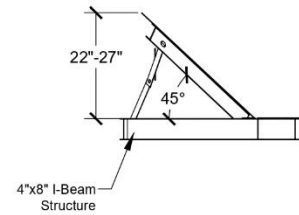
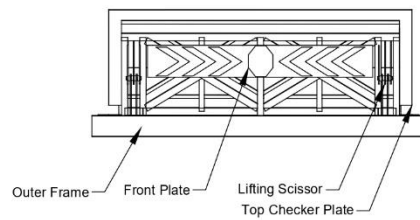
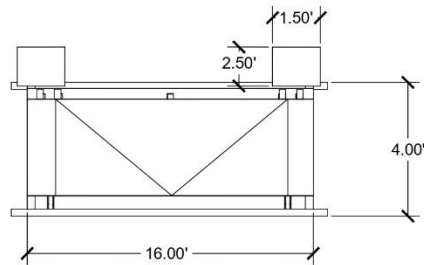
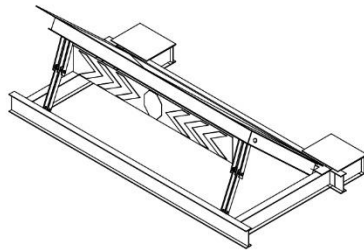


©Mechatronix. All Rights Reserved

 www.mechatronix.com.pk	TITLE:	DESIGNED BY:	MATERIAL:	FINISH:	DATE:
	Delta Type Road Blocker	Muhammad Ahtsham Khan	Galvanized Steel	Painted	01/11/2021
	DESCRIPTION:	CHECKED BY:	WEIGHT:	SCALE:	UNITS:
D-Type Road Blocker drawing	Manufacturing Supervisor	-	1:1	ft/in.	
	APPROVED BY:				
	Design Team				

Drawings & Dimensions :

1. Road Blocker - Surface Mount
2. Material: Galvanized Steel
3. Finish: Painted



©Mechatronix. All Rights Reserved



TITLE:
Surface Mount Road Blocker

DESCRIPTION:
Surface Mount Type Road Blocker
Drawing

DESIGNED BY:
Muhammad Ahtsham khan

CHECKED BY:
Manufacturing Supervisor

APPROVED BY:
Design Team

MATERIAL:
Galvanized Steel

WEIGHT:
-

FINISH:
Painted

SCALE:
1:1

DATE:
01/11/2021

UNITS:
ft/in.

Our Clients:



Product Gallery:



(+92) 051 4430 367-9

bsg@mechatronix.com.pk

www.mechatronix.com.pk

Plot No 169, Street # 9, Industrial Area, I-10/3, Islamabad