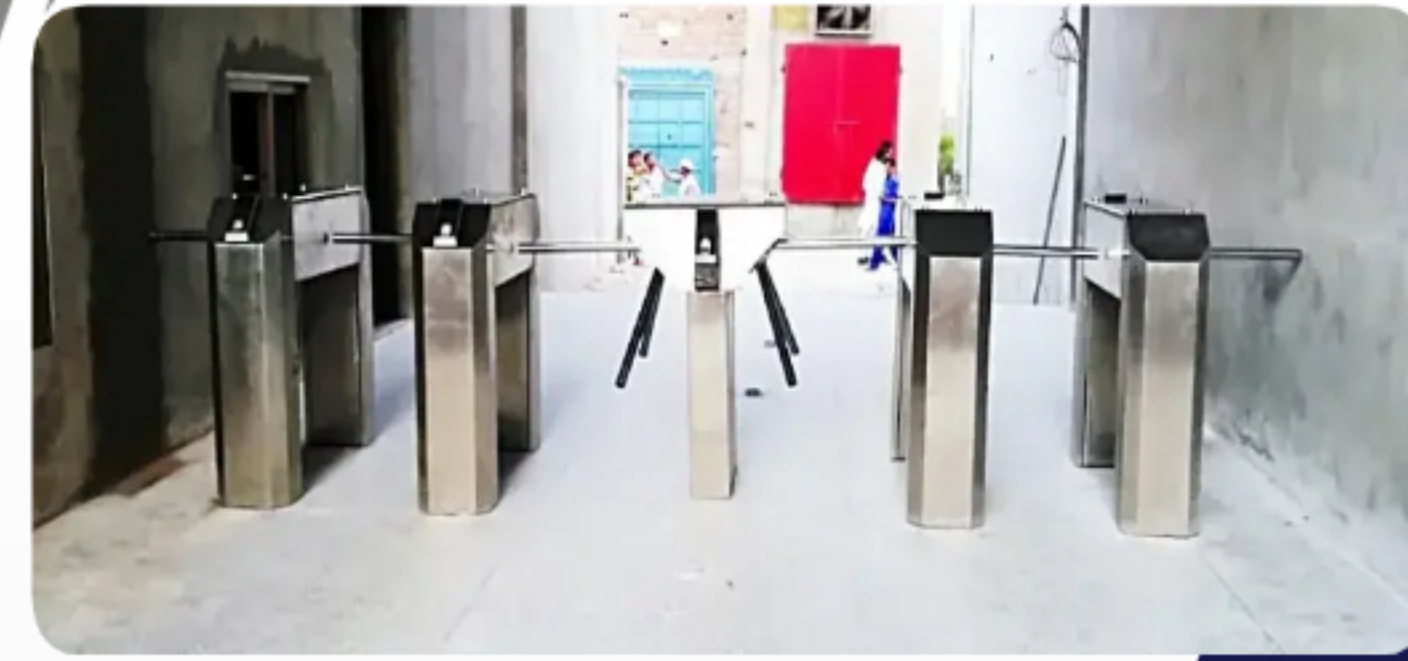


**Quality - Reliability & Trust**

# Waist Height Turnstile

**Turn-Mex Line, Dou, Mini, Slim & ECO Series**

- ✓ Warranty & after Sale Service
- ✓ All in One Flexible & Smart Solution
- ✓ MEX Security & Safety Features



## MECHATRONIX TURNMEX LINE:

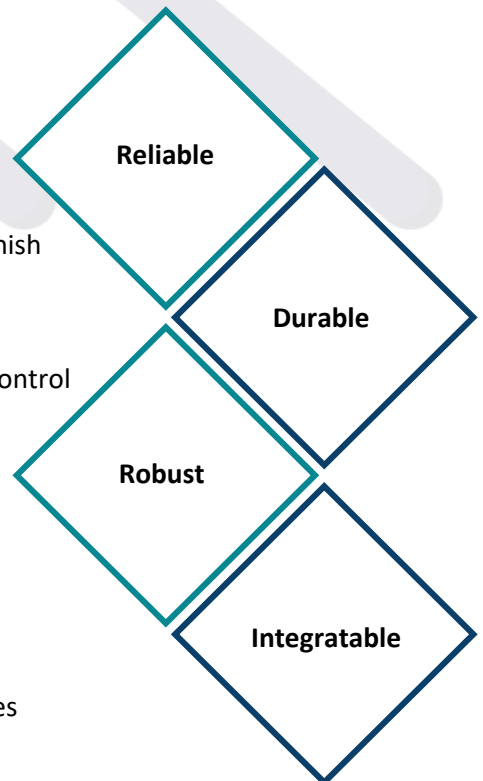
**Mechatronix Waist-Height Turnstiles** are designed & fabricated to manage access control and passenger flow. Waist Height Turnstiles or Tripod turnstiles are three Arm based access control turnstiles at waist blocking height.

**Turn-Mex Line** series turnstiles control access of Entry and Exit Points. The most Versatile & flexible security solution for indoor & outdoor security perimeter. Waist Heights are available in **single & double lane** options. Widely used for **attendance & access control** inside the perimeter. The turnstiles can easily be integrated with wide range of access control devices.



## Safety & Security Features:

- ✓ Robust design for Indoor/Outdoor Security Installations
- ✓ Heavy duty MEX-LOCK Mechanism
- ✓ Available in 304 Grade Stainless steel / Mild steel Powder coated finish
- ✓ Programmable Logic Controller (PLC) based Electrical Panel
- ✓ Mechanical key override – Clockwise & Anti Clockwise directional control
- ✓ Quiet, buffered solenoids & pawls
- ✓ Solenoids rated for 100% duty cycles
- ✓ Fiber locking disk and pawls – Low maintenance
- ✓ Fail-Secure & Fail-Safe (optional) feature
- ✓ Easy & Quick integration with wide range of Biometric & CAS devices
- ✓ 3-Years Warranty & after sale service with parts under SLA





## Optional Features &amp; Accessories:

✓ Turnstile Unites are available in two variations – Single & Double	✓ Fail-secure auto-lock on power failure (factory standard)
✓ Rustenburg granite (marble) top cover (factory standard)	✓ UPS with Dry Batteries of 12Volt 7Ah (2 connected in series)
✓ Fail-safe auto-unlock on power failure	✓ LED Red Cross & Green Arrow indicator light
✓ Up to 100 transactions in fail-secure mode	✓ Up to 60 minutes operation in fail-safe mod.
✓ Stainless steel top cover	✓ Customer company logo
✓ Digital counter with reset key	✓ LED light to improve aesthetics

## Applications:



- Industrial Manufacturing Plants
- Construction sites & Storage Facilities
- Military & Government Installations
- Corporate Security



- Airports, Stadiums and ports
- Educational Centers & Embassies
- Public transportation
- Other Outdoor & Indoor Installations



Technical Specifications:

Materials	304 Grade Stainless steel OR Mild Steel
Power Requirements	220 – 240 VAC – 50 Hz
Uni-directional Solenoids	24V DC / 2A (Coil Current)
Limit Switches	15A / 250V AC,
Relays	24V DC / 220V AC (8 pins)
Relay Base	Standard 8pins
Power Adapter	Standard Power Adapter 24V DC, 5A, Output
Working Humidity	0% ~ 95%
Recommended Installation	Indoor & Outdoor with Top hood (Optional)
Arms	3-Arm Section (120 Degree of Passage Space)

Model & Designs:

Mode of operations:

Turn-Mex Line (Single & double Lane)

01

Turn-Mex Line



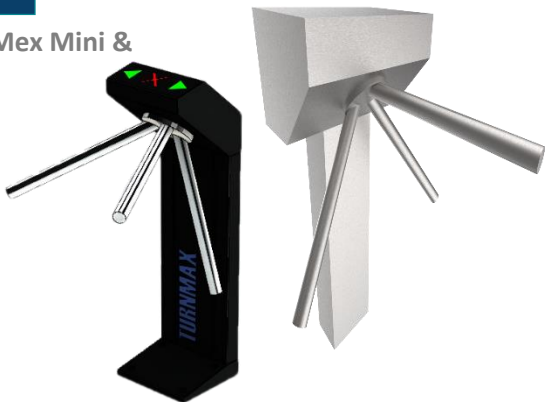
02

Turn-Mex  
ECO



03

Turn-Mex Mini &  
Slim



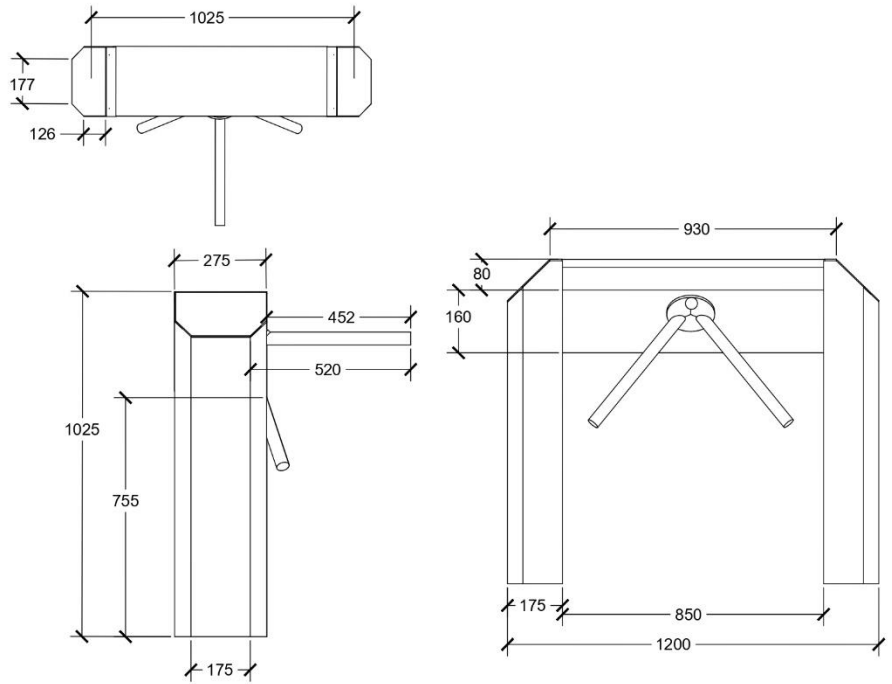
04

Turn-Mex  
Duo




## Drawings:

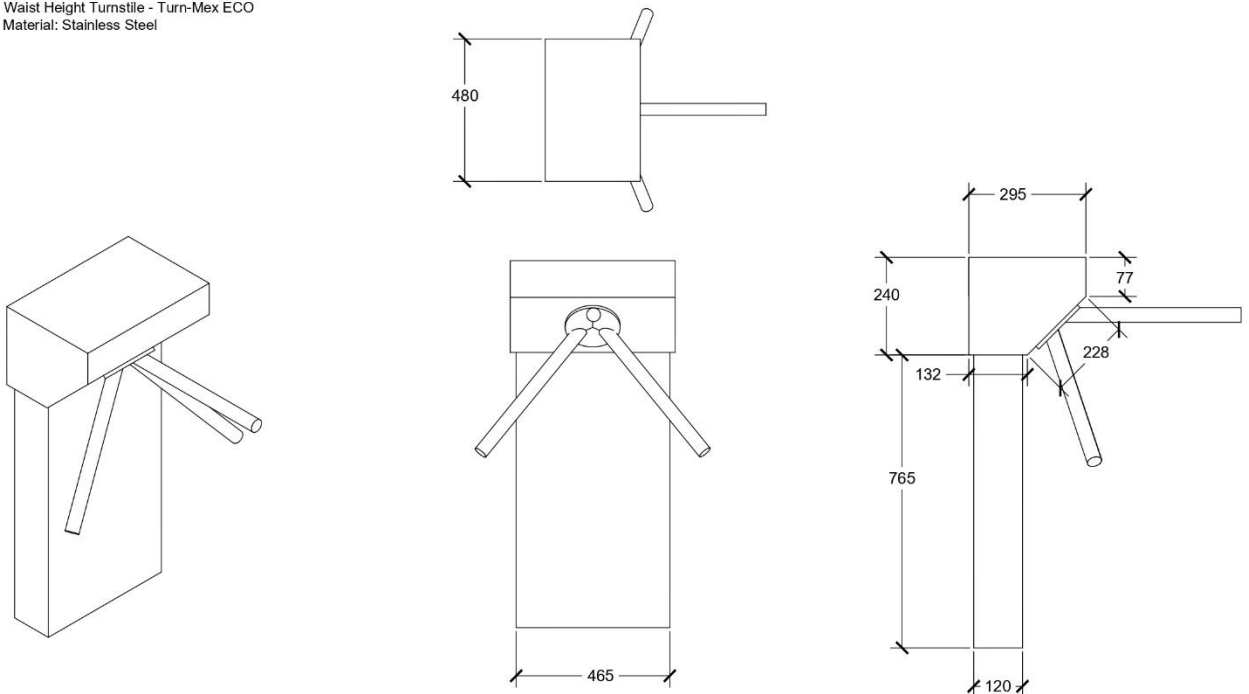
1. Waist Height Turnstile - TurnMex Line
2. Material: 304 Grade Stainless Steel
3. Passage width 452 mm (middle)
4. Wing Single Lane Rotor Placement at 120 degree




©Mechatronix. All Rights Reserved

 www.mechatronix.com.pk	<b>TITLE:</b> TurnMex-Line	<b>DESIGNED BY:</b> Muhammad Ahtsham khan	<b>MATERIAL:</b> SS-304	<b>FINISH:</b> -	<b>DATE:</b> 01/11/2021
	<b>DESCRIPTION:</b> Waist Height Turnstile	<b>CHECKED BY:</b>  <b>APPROVED BY:</b>	<b>WEIGHT:</b> -	<b>SCALE:</b> 1:1	<b>UNITS:</b> mm

1. Waist Height Turnstile - Turn-Mex ECO
2. Material: Stainless Steel

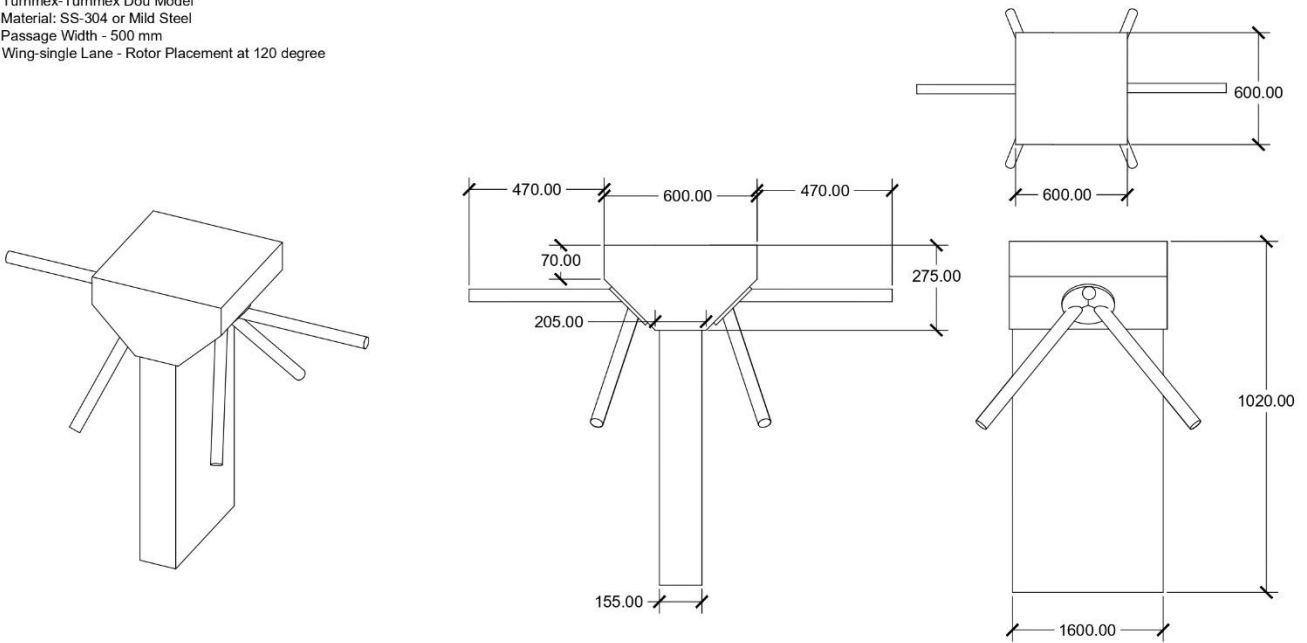


©Mechatronix. All Rights Reserved


 www.mechatronix.com.pk	<b>TITLE:</b> Turn-Mex ECO - Waist Height	<b>DESIGNED BY:</b> Muhammad Ahtsham khan	<b>MATERIAL:</b> SS	<b>FINISH:</b> -	<b>DATE:</b> 01/11/2021
	<b>DESCRIPTION:</b> Waist Height Turnstile Turn-Mex ECO model Drawing	<b>CHECKED BY:</b>  <b>APPROVED BY:</b>	<b>WEIGHT:</b> -	<b>SCALE:</b> 1:1	<b>UNITS:</b> mm

## Drawings:

1. Turnmex-Turmex Dou Model
2. Material: SS-304 or Mild Steel
3. Passage Width - 500 mm
4. Wing-single Lane - Rotor Placement at 120 degree



©Mechatronix. All Rights Reserved

 <a href="http://www.mechatronix.com.pk">www.mechatronix.com.pk</a>	<b>TITLE:</b> Turnmex Dou	<b>DESIGNED BY:</b> Muhammad Ahtsham khan	<b>MATERIAL:</b> SS-304 or Mild Steel	<b>FINISH:</b> -	<b>DATE:</b> 01/11/2021
	<b>DESCRIPTION:</b> Waist Height Turnstile - Dual Lane	<b>CHECKED BY:</b>  <b>APPROVED BY:</b>	<b>WEIGHT:</b> -	<b>SCALE:</b> 1:1	<b>UNITS:</b> ft./in.

## Installation &amp; Maintenance:

Delivery	Fully assembled / Kit Form
Site Preparation	Flat & Level finish floor +/- 0.2"
Bolting depth	MIN 3.9"

## Our Clients:





Product Gallery:



☎ (+92) 051 4430 367-9

✉ bsg@mechatronix.com.pk

🌐 www.mechatronix.com.pk

📍 Plot No 169, Street # 9, Industrial Area, I-10/3, Islamabad